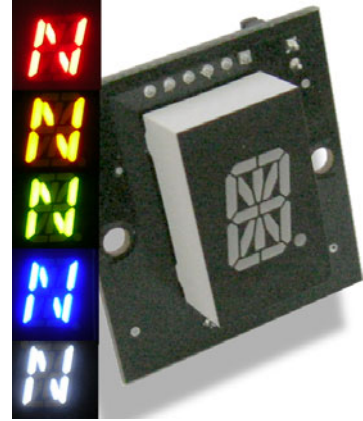


The SD9 Alphanumeric Display Card is designed to provide display gear position through the Plasma-Lite V2 or Nitro-SLG modules.

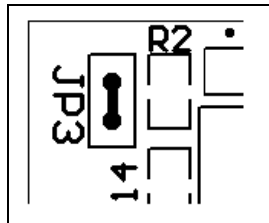
### Features:

- Displays numbers "1" through "9" as well as the letters "N", "L", "P" and "R".
- Available in several colors, red, green, yellow, blue & white.
- Small PCB footprint 1.48"x1.38" with 0.5" character height.
- Powered by the USB bus.
- Optional fixed or external brightness control.

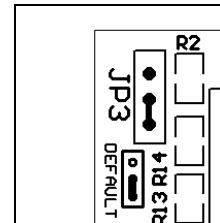


### Fixed Brightness Control:

Put jumper across **JP3** on the SD9 card for fixed brightness.



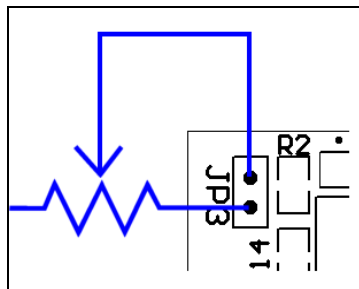
PCB R1.00



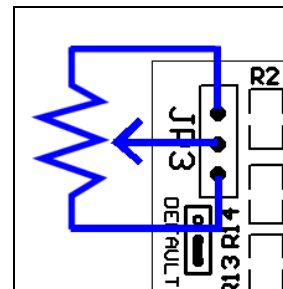
PCB R2.00

### Variable Brightness Control:

Remove the jumper from **JP3** on the SD9 card and connect a 10K pot as follows. Adjust the pot for desired brightness.



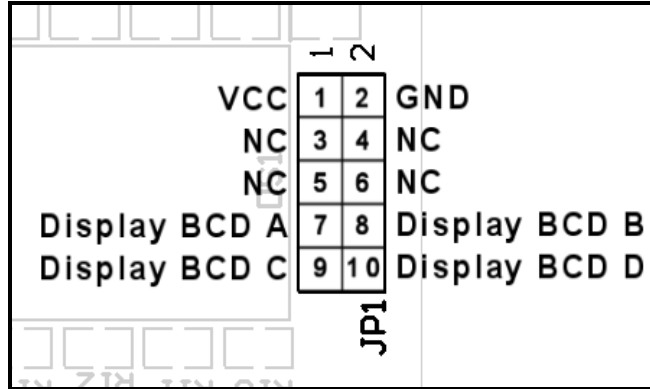
PCB R1.00



PCB R2.00

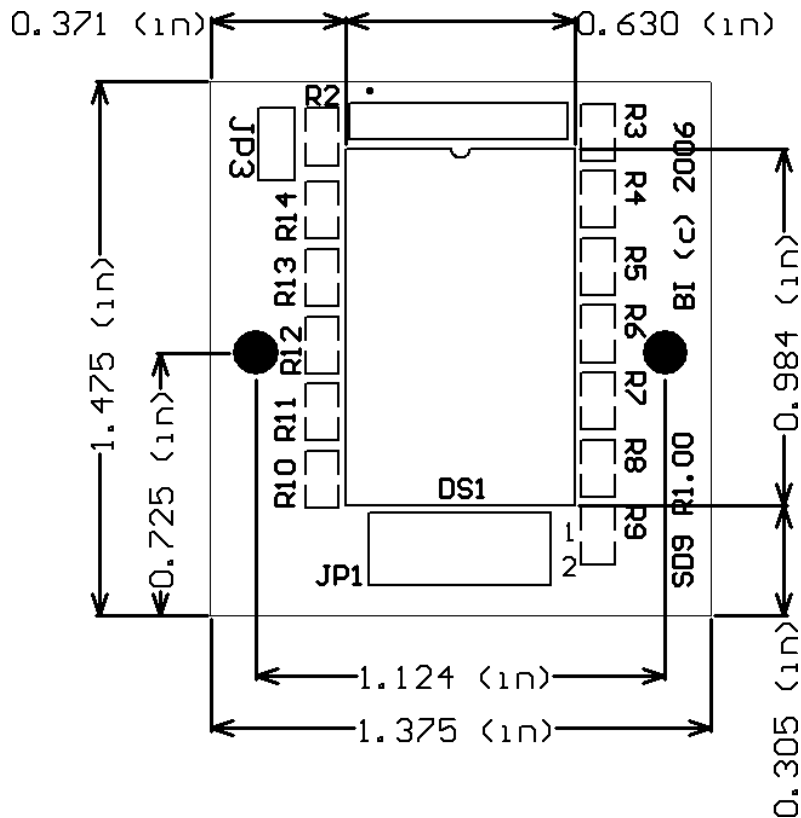
**Connecting the SD9 Card:**

Using a 10 contact IDC cable, connect to the Plasma-Lite HAT port (**JP1**) or the Nitro-SLG card **SD9** port, taking note of pin 1 on **JP1** of the SD9 card.



**IMPORTANT:** the HAT port (JP1) on the Plasma-Lite does not have VCC on pin 1, therefore the VCC pin on the SD9 card must be connected to the VCC pin on JP6 of the Plasma-Lite.

**Mechanical Specifications:**



Visit [www.betainnovations.com](http://www.betainnovations.com) for the availability of expansion modules and accessories.